



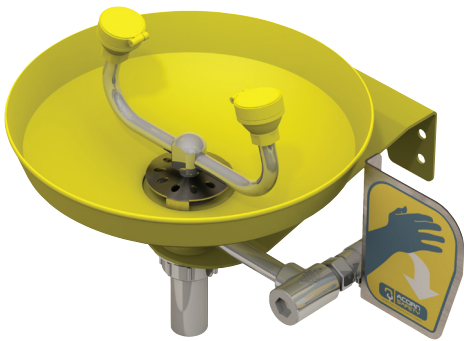
EMERGENCY DRENCH EQUIPMENT

Member of Acorn Engineering's
Family of Companies



EYE WASHES
EYE/FACE WASHES
SHOWERS
COMBINATION STATIONS
DRENCH HOSES
MIXING VALVES
PARTS & ACCESSORIES





Model So410

Wall mounted eyewash, with an ABS plastic bowl and eyewash spray heads, integral inline strainer and a stay-open 1/2" ball valve with a push handle and Hi-Vis yellow powder coated wall bracket.

Additional options:

- Barrier Free
- 1-1/4 P-Trap
- Freeze and scald protection valves
- Flip-top stainless steel dust covers
- Thermostatic mixing valve

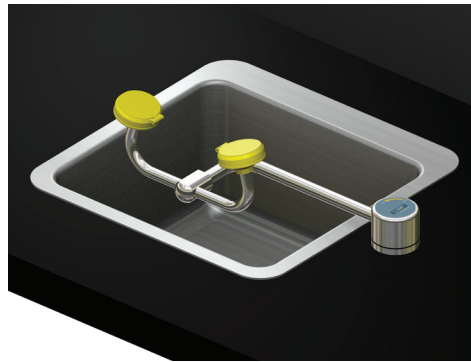


Model So440

Wall mounted eye/face wash, with a stainless steel bowl, ABS plastic eye/face wash spray heads, an inline strainer and Hi-Vis yellow powder coated wall bracket.

Additional options:

- Stainless steel clam shell dust cover
- Flow switch, single or double pole
- Barrier free
- Thermostatic mixing valve
- Less wall bracket

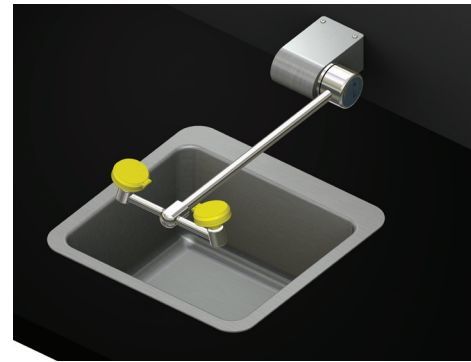


Model Sog60-RH

Deck mounted swivel eye/face wash with ABS plastic eye/face wash spray heads. The eye/face wash swings out horizontally from the right side and the water flow is activated automatically.

Additional options:

- Left hand activation
- All stainless steel
- Thermostatic mixing valve
- Flip-top stainless steel dust covers
- Flow switch, single or double pole

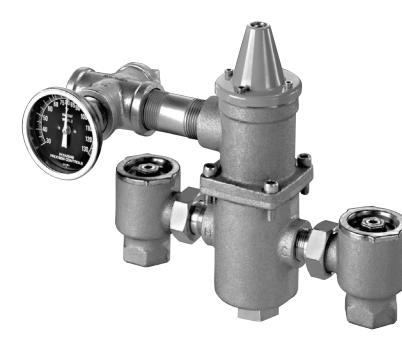


Model So660-RH

Wall mounted swing down eye/face wash with ABS plastic eye/face wash spray heads. The eye/face wash swings down over the sink from the rear and the water flow is activated automatically.

Additional options:

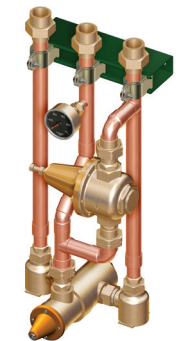
- All stainless steel
- Left hand activation
- Thermostatic mixing valve
- Flip-top stainless steel dust covers



TMV Series

Mixing valves thermostatically mix hot and cold water to supply tepid flushing water to showers and eyewashes.

- Models available with flows up to 66 GPM
- Temperature adjustment range of 60° F - 95° F
- Paraffin based thermostatic control element



TMB Series

Mixing valves mixes a wide range of tepid flushing water with the additional feature of an external, full flow cold water bypass

- Proprietary full flow bypass
- Tamper resistant temperature adjustment
- Capable of supplying multiple drench fixtures
- Models available with flows up to 66 GPM



Model S2260-RA-PAN

Barrier free, recessed activated, eye/face wash with ABS plastic eye/face wash spray heads and a horizontally mounted emergency shower with a stainless steel showerhead. NOTE: When the activation is installed at the proper height, unit meets the ADA accessibility requirements.

Additional options:

- Electric light and horn alarm
- Modesty curtain
- All stainless steel
- Thermostatic mixing valve



Model So320

Hi-Vis yellow pedestal mounted eye/face wash with an ABS plastic bowl and eye/face wash spray heads, an inline strainer and a stay-open 1/2" ball valve with a push handle.

Additional options:

- Barrier free
- Hand/foot control
- Stainless steel ball valve
- Freeze and scald protection valves
- Hand held drench hose

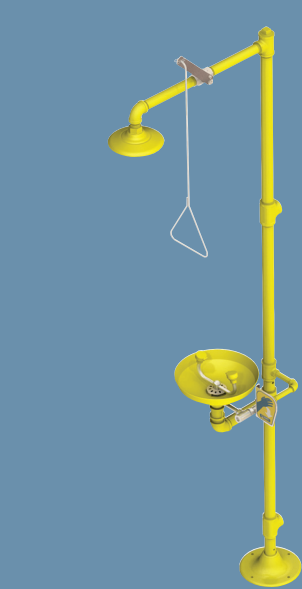


Model S1200

Horizontally mounted emergency shower with an ABS plastic showerhead and a 1" stay-open ball valve with a pull rod.

Additional options:

- Modesty curtain
- 60" pull rod
- Flow switch
- Electric light and horn alarm
- Thermostatic mixing valve.



Model S1310

Pedestal mounted combination station with an ABS plastic bowl and eyewash spray heads, an inline strainer and a stay-open 1/2" ball valve with a push handle and a shower with a plastic showerhead and a 1" stay-open ball valve with a pull rod.

Additional options:

- Barrier free
- Hand/foot control
- Thermostatic mixing valves
- Modesty curtain
- Hand held drench hose



Model S1330

Pedestal mounted combination station with a stainless steel bowl, ABS plastic eyewash spray heads, an inline strainer and a stay-open 1/2" ball valve with a push handle and a shower with an ABS plastic showerhead and a 1" stay-open ball valve with a pull rod.

Additional options:

- Electric light and horn alarm
- Modesty curtain
- Stainless steel clam shell dust cover
- Flow switch
- Barrier free



Model S1340

Pedestal mounted combination station with a stainless steel bowl, ABS plastic eye/face wash spray heads, an inline strainer and a stay-open 1/2" ball valve with a push handle and a shower with an ABS plastic showerhead and a 1" stay-open ball valve with a pull rod.

Additional options:

- Barrier free
- Thermostatic mixing valve
- Electric light and alarm
- Freeze and scald protection valves
- Stainless steel ball valves



EMERGENCY DRENCH EQUIPMENT

THE ACORN ADVANTAGE

There are a number of features standard to the Acorn Safety line that enhances product use and awareness. An integral inline strainer is standard on all eye and eye/face wash models to remove the risk of injurious particles in the water line. All Acorn models are powder coated in a HI-Vis yellow. This increases the visual recognition of the models' location and provides additional protection in corrosive environments. Many Acorn Safety models will have extensive pre-assembly at the factory before shipping. This will allow for easier and quicker installation by the customer.



Member of Acorn Engineering's
Family of Companies

P.O. Box 3527
City of Industry, CA
91744-0527 USA

p [800] 591 | 9372
p [626] 855 | 4804
f [626] 937 | 4213

w [acornsafety.com]

L1001161

EYE WASHES
EYE/FACE WASHES
SHOWERS

COMBINATION STATIONS
DRENCH HOSES
MIXING VALVES
PARTS & ACCESSORIES

acornsafety.com